

SCMC, INCORPORATED

1665 West Drive
San Marino, CA 91108
Phone: (626) 299-7000
Fax: (626) 299-7010



1623 El Verano Drive
Thousand Oaks, CA 91362
Phone: (805) 495-1141

CHANGE ORDER REQUEST

PROJECT NAME: Barth Athletics Complex
HMS Phase IIIA

SCMC C.O.R. #: 8
DATE: 5/8/2019

CONTRACTOR: Shenk Developers
210 N. Central Ave. #225
Glendale CA 91203

BID DIVISION #: 3 HVAC
REF. DOC.: HVAC 05R

ITEM DESCRIPTION OF WORK:

Furnish and supply labor and materials to reconfigure ductwork for AC-4A
Per RFI # 08 response

TOTAL AMOUNT REQUESTED: \$6,908.00

OF DAYS REQUESTED: none

REASON:

Bid Set of plans and specifications did not provide sufficient room to route supply and return ducts.
Response given via RFI HVAC #08

[Signature]
PROGRAM MANAGER

5/8/19
DATE

[Signature]
ARCHITECT

5.8.19
DATE

[Signature]
OWNER

5/8/19
DATE

1/2

SCHOOL NAME	HUNTINGTON MIDDLE SCHOOL PHASE III	Change Order Proposal
PROJECT NAME	CONSTRUCTION OF BARTH ATHLETIC COMPLEX	
DISTRICT NAME	SAN MARINO UNIFIED SCHOOL DISTRICT	
		COP#: 05R

Bid #	F01 - 17/18 - BID DIVISION #3 : HVAC	Date: 9/27/2019
Architect:	LPA	RFI #: 08
Project Manager:	GERALD SCHOBBER	
Contractor:	SHENK DEVELOPERS	
		CCD #:

REVISED

DESCRIPTION: RECONFIGURE SUPPLY DUCTWORK AT AC-AA TO RISE VERTICALLY ABOVE RETAIN DUCTWORK
SUPPORT DUCTWORK FROM WALL PER DUCT SUPPORT FROM EXTERIOR WALL DETAIL 1 & AS PER RFI# 08
(Contractor to provide detailed narrative of Change Order Request work, attach additional pages as required)

Subcontractor Costs (used when work is subcontracted)				
Company	Description	Material	Labor	Totals
LIBERTY CLIMATE CONTROL				
	PLEASE FIND ATTACHED OUR HVAC			\$6,450.-
	SUB-CONTRACTOR'S DETAILED COST			
	BREAKDOWN:			

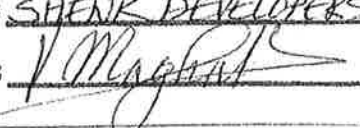
Subtotals	\$6,450.-
Subcontractor OH and Profit (see GC's for %'s)	INCLUDED
Subcontractor Subtotal	\$6,450.-
Contractor OH and Profit (see GC's for 6%'s)	\$323.-
Subcontractor Total + Contractor Mark-up (Line 1)	\$6,773.-

Contractor Costs (used when work is self-performed)				
Contractor	Description	Material	Labor	Totals

Subtotals	\$6,773.-
Contractor OH and Profit (15%)	
Contractor Total + Contractor Mark-up (Line 2)	\$6,773.-
Bonding 2% (Line 3)	135.-

TOTAL COSTS FOR COP: ADD \$6,908.-
(Line 1 + Line 2 + Line 3)

TOTAL TIME FOR COP:

CONTRACTOR: SHENK DEVELOPERS
Submitted by: 

Date: 9/27/2019

HVAC CO7#05R

2/12



Change Order

Order#: 5

Order Date: 08/29/2018

To: SHENK DEVELOPERS
210 NORTH CENTRAL AVE #225
GLENDALE CA 91203

Project: 1819
SAN MARINO USD-HUNTINGTON MS
1700 HUNTINGTON DR
SAN MARINO CA 91108

The contractor agrees to perform and the owner agrees to pay for the following changes to this contract.

Plans Attached ☐

Ordered By: 2 CHRISTOPHER GUNTHER

Customer Order:

Specifications Attached ☐

Description of Work	Amount
Material	1,612.10
Labor	2,437.12
Labor	2,400.47

Notes

Per RFI No.: 08 response contractor should reconfigure supply ductwork at AC-4A to rise vertically above return ductwork. Contractor to support ductwork from wall per duct support from exterior wall detail 1/-

Design Review Comments:

1a. Review Comment: In General the labor hours seem to be high it's almost a weeks' worth of labor to adjust one section of duct.
1b. Response: Labor hours seem appropriate for the change. To clarify it is 24 hours for installation and 12 hours to fabricate ducts in shop. In good faith and compromise we have removed 4 hours associated with procurement and delivery.

2a. Review Comment: If the ducts weren't installed yet, I would expect a breakdown showing the difference between the change and the original contract.

2b. Response: Original supply ductwork is still required. Cost is for addition of vertical supply ductwork to rise above return ductwork, 90 elbow fittings and wall supports shown on detail 1 of RFI sketch.

Negative changes will lower the overall contract price requiring no additional payment by owner.

Requested Amount of Change

6,449.69

The original Contract Sum was	467,000.00
Net change by previous Change Orders	0.00
The Contract Sum prior to this Change Order	467,000.00
The Contract Sum will be changed by this Change Order	6,449.69
The new Contract Sum including this Change Order will be	473,449.69
The Contract Time will be changed by	0 Days

Owner: _____ Date: _____

Contractor: _____ Date: _____

HVAC COP*OSR

3/12

Chris Gunther

From: Shenk Developers <shenkdevelopers@hotmail.com>
Sent: Saturday, September 22, 2018 12:03 PM
To: Chris Gunther
Subject: Fw: Huntington MS Barth Athletic complex;COP #05-Duct Support Detail

Hratch Vorperian
Project Manager
818.281.9541

Shenk Developers
General Contractor
210 N. Central Ave., Suite 225
Glendale, Ca 91203

T:818.500.0990, F:818.500.1418
shenkdevelopers@hotmail.com

From: Gerald Schober <gerald@scmcinc.com>
Sent: Saturday, September 22, 2018 11:54 AM
To: Shenk Developers; Pete Adame
Subject: Fw: Huntington MS Barth Athletic complex;COP #05-Duct Support Detail

Please see Architect's comments below and respond

Gerald Schober
SCMC, Inc.
1623 El Verano Drive
Thousand Oaks CA 91362
p 805-495-1141
m 805-390-2962

1665 West Drive
San Marino CA 91108
p 626-299-7000 ext 1393



From: Seamark, Doug
Sent: Wednesday, September 19, 2018 4:47 PM
To: Mehta, Nicole <nmehta@lpadesignstudios.com>; Edwards, Terry <tedwards@lpadesignstudios.com>
Subject: RE: Huntington MS Barth Athletic complex;COP #05-Duct Support Detail

HVAC COP #05R 4/12

Nicole,

In general the labor hours seem to be high it's almost a weeks' worth of labor to adjust one section of duct.

If the ducts weren't installed/fabricated yet, I would expect a break down showing the difference between the change and the original contract.

Thanks,

Doug

Douglas Seamark PE

Project Manager

Associate

Mechanical Engineering

D: 949.701.4092 O: 949.261.1001





LCC Bid Item Breakout; with Notes

March 26, 2019

LCC Bid Item Breakout; with Notes

Job# 1819 to 1819, Bid Item# 5 to 5

DESCRIPTION	UNIT	QTY	COST	EXT COST	O/H RATE	O/H EXT PRICE
Job 1819 SAN MARINO USD-HUNTINGTON MS						
DESCRIPTION OF CHANGE:						
Bid Item 5 PCQ_AC-4A RECONFIGURED SUPPLY DUCTWORK						
Reconfigure AC-4A Supply Duct to Rise Vertically above Return Ductwork						
1. Field Labor Hours	Hr	24.00	86.57	2,077.68	15.00	311.65 2,437.12
2. Shop Labor Hours	Hr	12.00	86.57	1,038.84	15.00	155.83 1,218.56
.....Including ductwork fabrication						
Fabricate duct support from exterior wall per detail 1/-						
.....Fuse 1.5x1.5x 3/16" angle to 3x3x 1/4" angle with 3/16" fillet welds	Hr	6.00	91.60	549.60	15.00	82.44 644.68
.....Fuse 3x3x 1/4" angle with square groove weld all-around	Hr	5.00	91.60	458.00	15.00	68.70 537.23
Equipment and Materials:						
Ductwork fabrication materials and components including:	Lot	1.00	500.00	500.00	15.00	82.50 645.15
.....Four bolt corners and clips						
.....Four bolt flanges and gaskets						
.....1/4" bead sealant seam						
.....Duct sealer						
.....Galvanized 24 ga. sheet steel, lock-forming grade						
.....Insulation liner, 2" thick 1-1/2# density w/ pins & clips						
.....2" Air foil vane and vane rail						
.....Misc. TEK screws, bolts and nuts						
Duct support materials per detail 1/-						
.....3"x3"x 1/4" HR galvanized A36 steel angle, 20-ft lengths	Ea.	1.00	327.60	327.60	15.00	54.05 422.70
.....1-1/2" x 1-1/2" x 3/16" HR galvanized A36 steel angle, 20-ft lengths	Ea.	1.00	100.80	100.80	15.00	16.63 130.06
.....1/2" threaded S.S. rod epoxy anchor w/ 4-1/2" embed	Ea.	6.00	53.50	321.00	15.00	52.97 414.19

HVAC COP * 05R

5/12

DESCRIPTION	UNIT	QTY	COST	EXT COST	O/H RATE	O/H EXT PRICE
-------------	------	-----	------	----------	----------	---------------

Bid Item Totals:**6,449.69**

Grand Totals:**6,449.69**

HVAC COP #0512 6/12

HVA C COP * 05 R

7/12



LIBERTY CLIMATE CONTROL INC.

2447 North Chico Ave
South El Monte CA 91733
(626) 575-3131

License: 327683

Request For Information

Date of Request: 08/09/2018

RFI#: 8

Prepared By: CHRISTOPHER GUNTHER

To: SHENK DEVELOPERS
210 NORTH CENTRAL AVE #225
GLENDALE CA 91203

Project: 1819
SAN MARNO USD-HUNTINGTON MS
1700 HUNTINGTON DR
SAN MARINO CA 91108

You are hereby invited to provide information on the following items.
Information must be received prior to to be considered.

☐ Potential Change in
Project Schedule

☐ May require a
Change Order

☐ Requires a Change
of Plans/Specifications

AC-4A supply and return ducts penetrate gymnasium wall at column C between grids 3&4.

The return duct is shown to route under the supply duct.

See attached section view that there is insufficient room for return duct to pass around the supply which runs in front. Both the supply and return duct plenums are shown not to exceed 36" from roof level per 09/M7.01

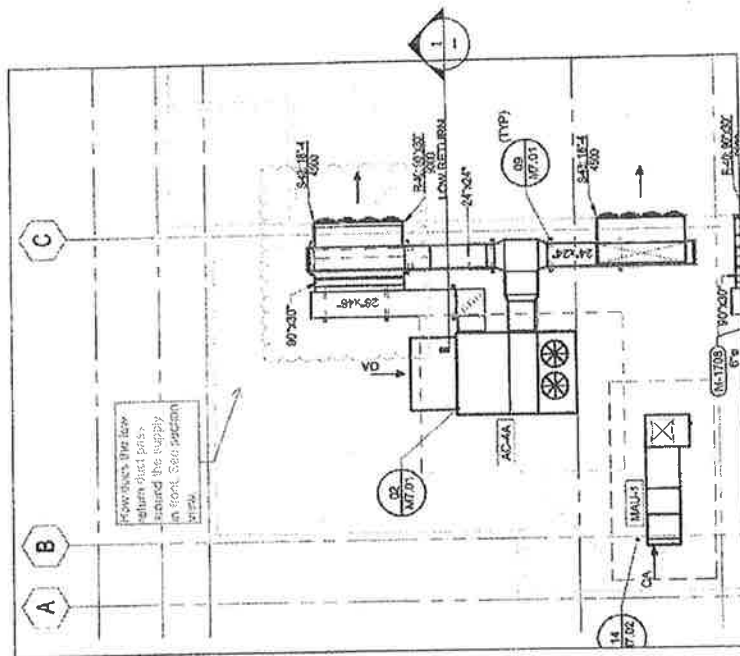
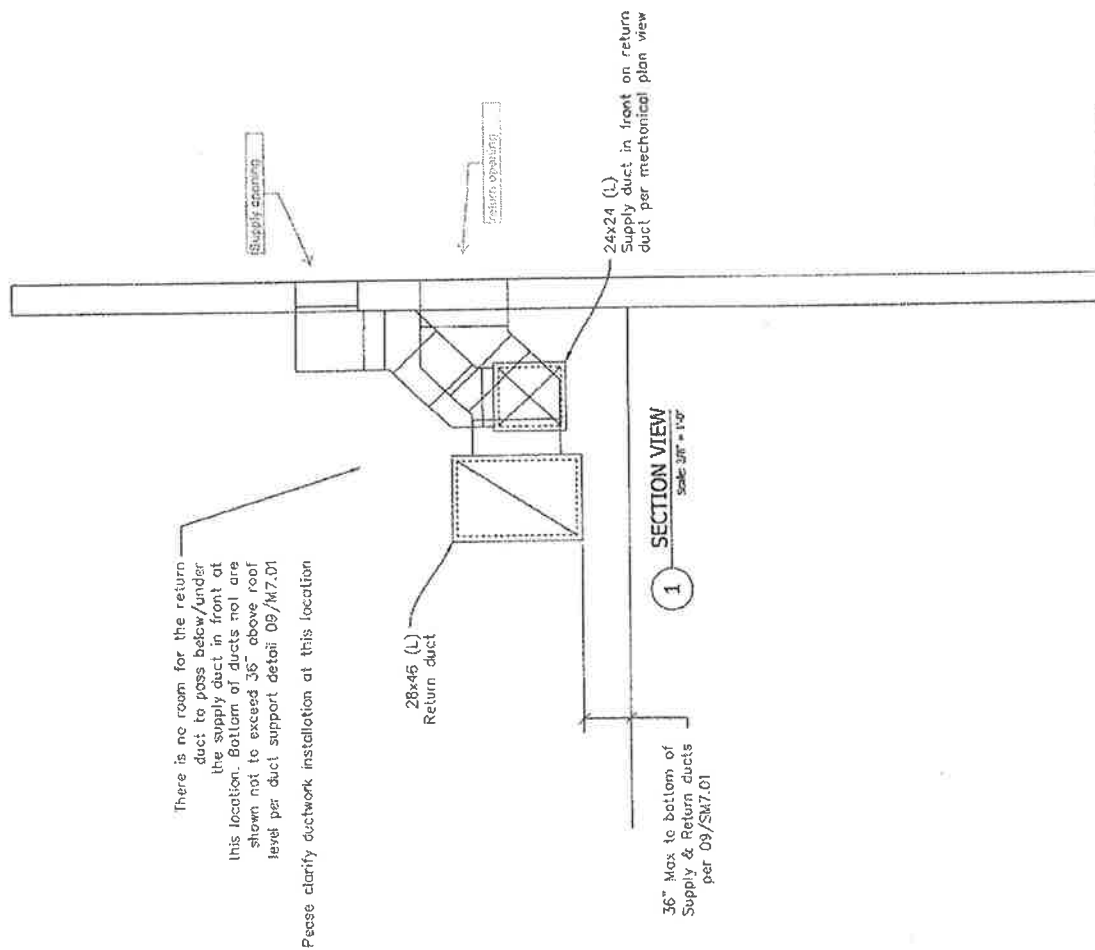
Please review and clarify duct installation at this location.

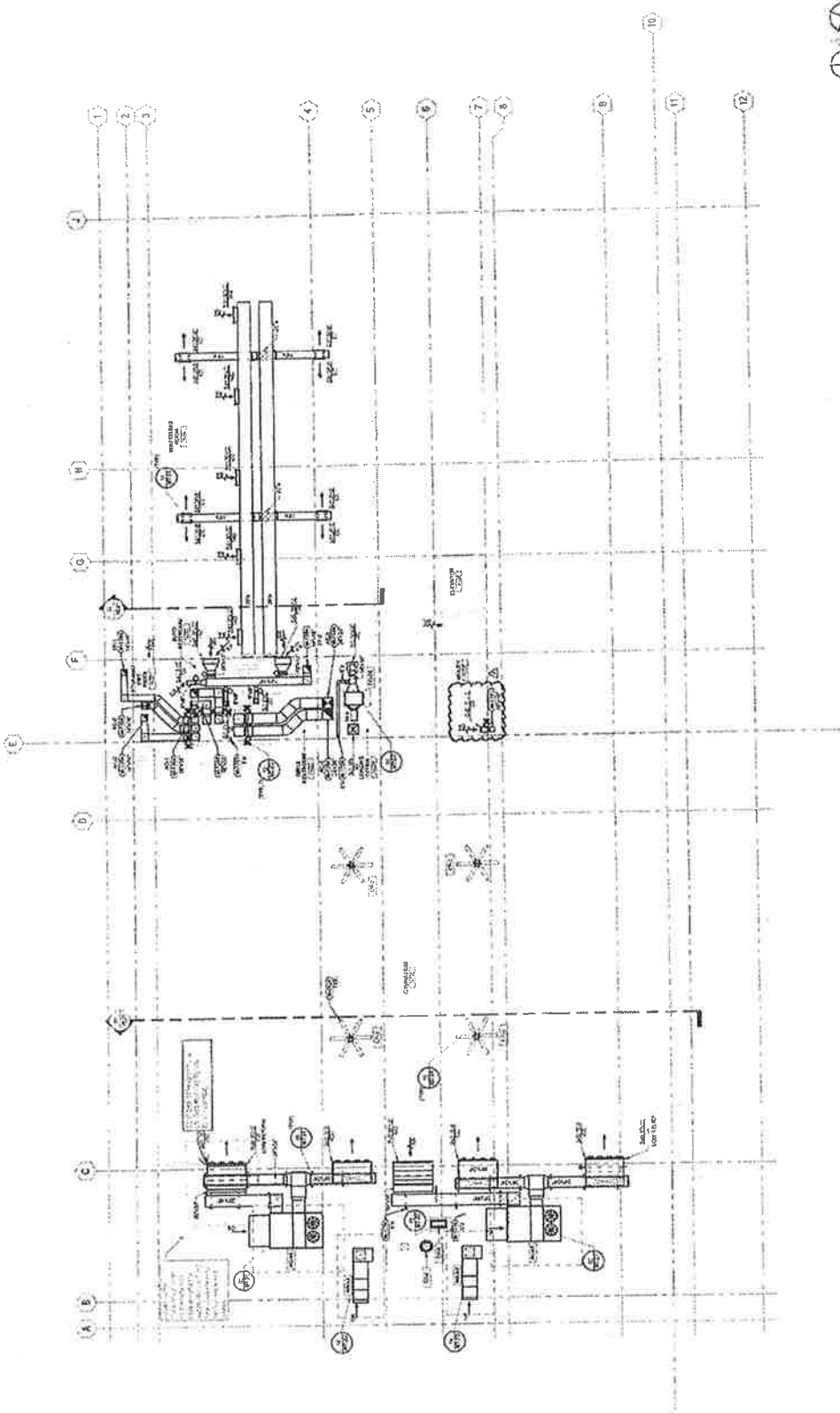
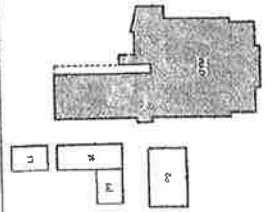
Best Regards,

Information Supplied:

Please see attached revised floor plan (page 5) showing supply ductwork reconfigured to rise vertically above return ductwork. Vertical ductwork to be supported per detail 17 included in RFI #06 (page 5). See sketch on page 6 for 3D isometric of duct routing and detail for duct support from masonry exterior wall. No additional roof mounted duct supports are required.

T. Edwards, LPA
08/20/18



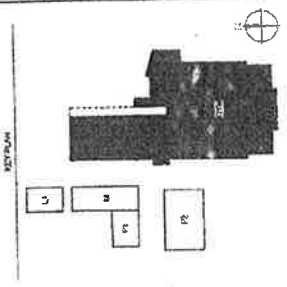
[illegible]

HUNTINGTON MIDDLE SCHOOL
ATHLETIC CENTER
1700 Huntington Drive
San Marino, CA 91138
Delivered by
SAN MARINO VALLEY COLLEGE DISTRICT

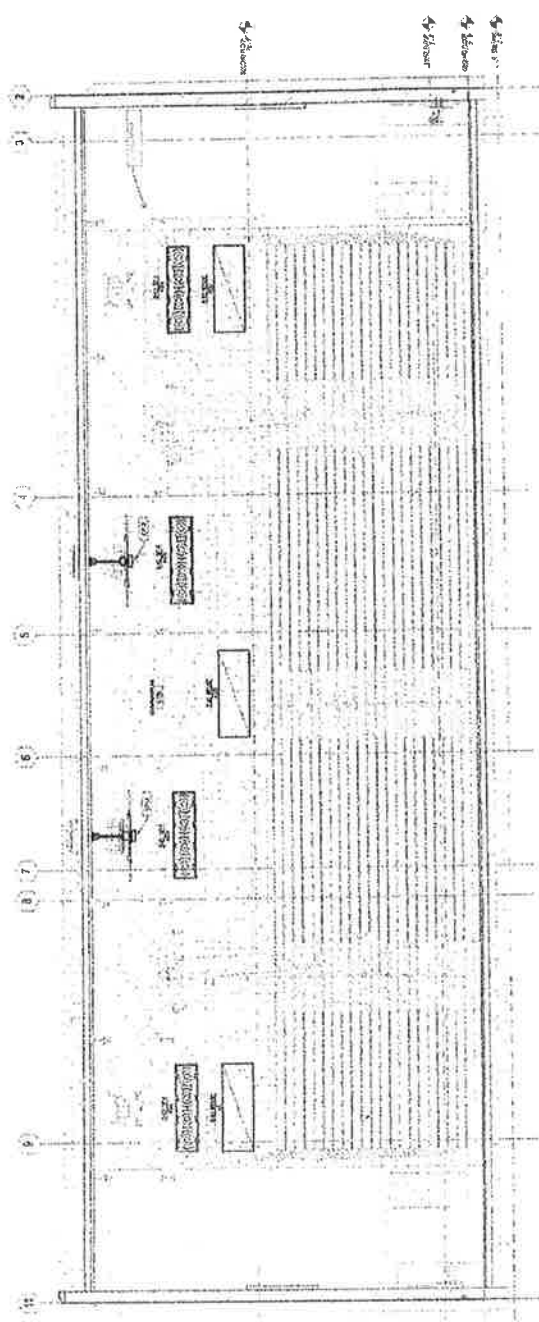
RECEIVED
JAN 10 1964
U.S. DEPARTMENT OF JUSTICE
FEDERAL BUREAU OF INVESTIGATION
WASHINGTON, D.C. 20535



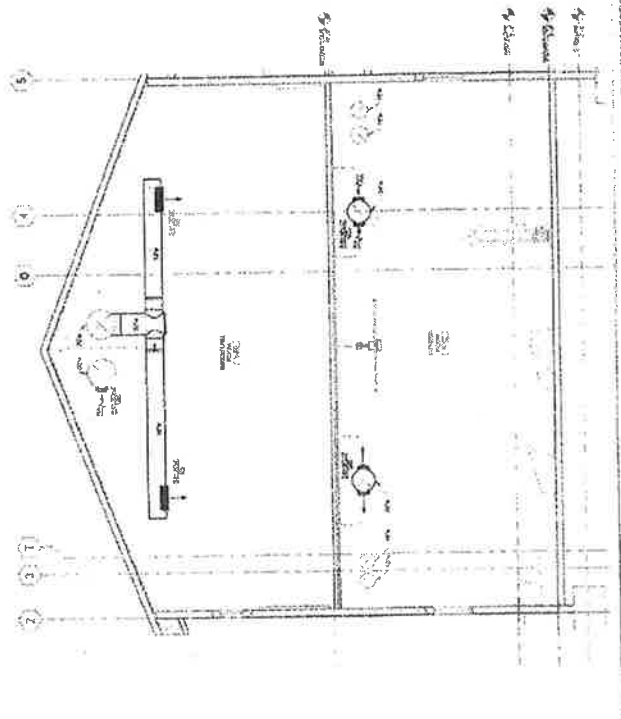
1117 Parkville Avenue, Suite 1100
Kansas, Colorado 66104



01
...
100' 00"
Gymnasium Section



02 | 30th Year | 2020-21 | Page No. _____



HVAC COP 55P

MECHANICAL SYMBOLS

M2.02 11/12

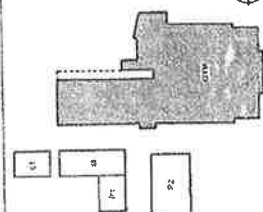
HUNTINGTON MIDDLE SCHOOL
1100 HUNTINGTON DRIVE
SAN ANTONIO, TEXAS 78204
DESIGNED BY
SAN ANTONIO LIAISON SCHOOL DISTRICT

NO.	DESCRIPTION	DATE	BY	CHECKED
1	REVISION			
2	REVISION			
3	REVISION			
4	REVISION			
5	REVISION			
6	REVISION			
7	REVISION			
8	REVISION			
9	REVISION			
10	REVISION			
11	REVISION			
12	REVISION			

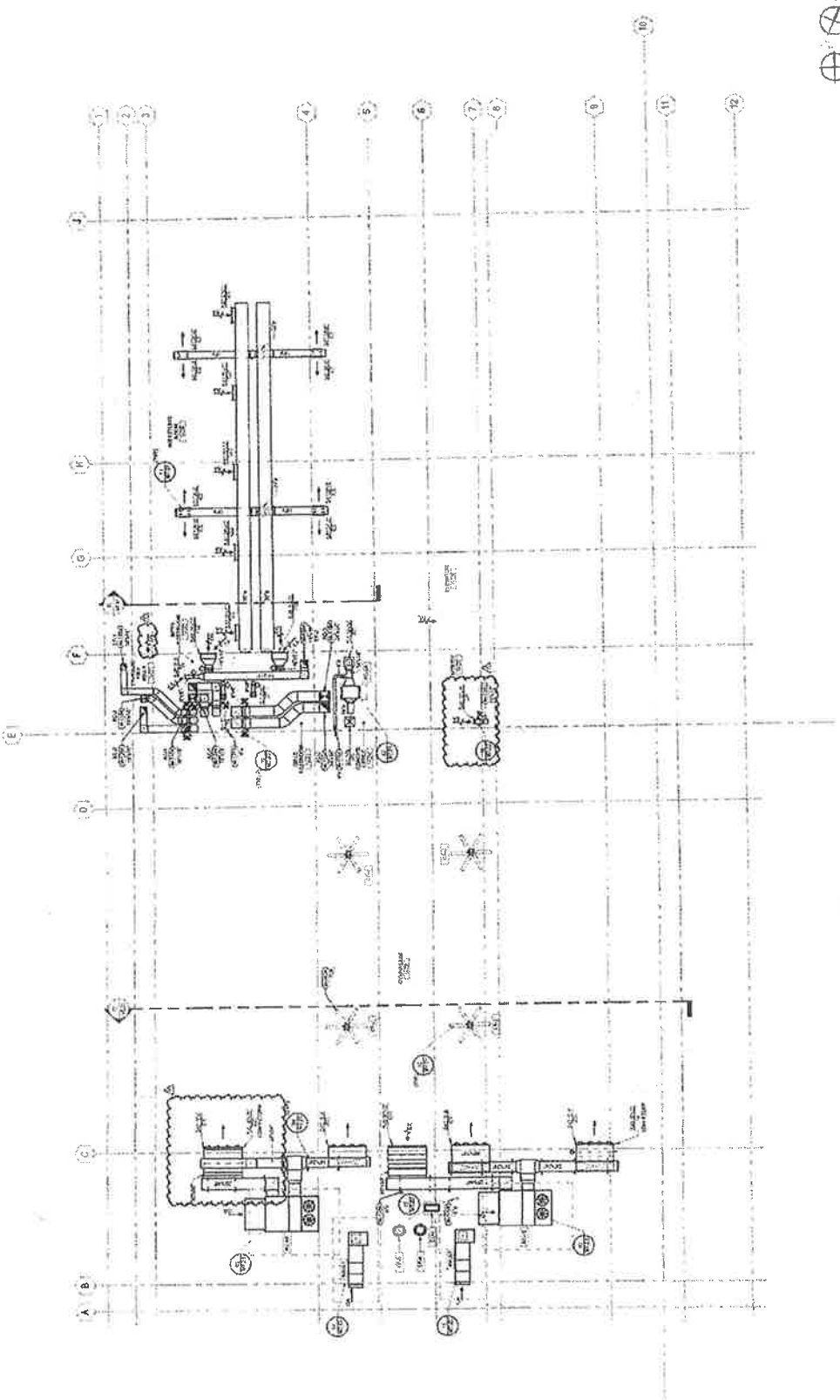


LPA

1100 Huntington Drive
San Antonio, Texas 78204
1100 Huntington Drive
San Antonio, Texas 78204
1100 Huntington Drive
San Antonio, Texas 78204

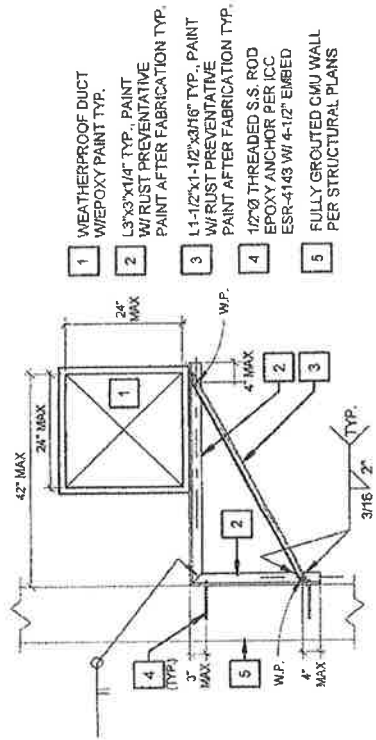


ITEM	DESCRIPTION
1	REVISION
2	REVISION
3	REVISION
4	REVISION
5	REVISION
6	REVISION
7	REVISION
8	REVISION
9	REVISION
10	REVISION
11	REVISION
12	REVISION



HVAC COP*OSR

12/12



- 1 WEATHERPROOF DUCT W/ EPOXY PAINT TYP.
- 2 L3"x3"x1/4" TYP., PAINT W/ RUST PREVENTATIVE PAINT AFTER FABRICATION TYP.
- 3 L1-1/2"x1-1/2"x3/16" TYP., PAINT W/ RUST PREVENTATIVE PAINT AFTER FABRICATION TYP.
- 4 1/2" Ø THREADED S.S. ROD EPOXY ANCHOR PER ICC ESR-4143 W/ 4-1/2" EMBED
- 5 FULLY GROUTED CHU WALL PER STRUCTURAL PLANS

1

NTS

DUCT SUPPORT FROM EXTERIOR WALL

SEE SKETCH ON PG. 5 OF RFI # 06 (SUPPLY DUCTWORK)

SEE SKETCH ON PG. 4 OF RFI # 07 (RETURN DUCTWORK)

